



Water engineers to the world

## Series 851/00 (1250) PN16 Single Small Orifice Air Relief Valve

Use
For portable water to max. 70°C

Tests
Hydraulic tests: Seat: 1.1 x PN                      Body: 1.5 x PN

Optional Extras
Isolating valve                      Piped outlet connections
Inlet Flange                              Inflow check valve
PN 25 version                          Alternative materials

Applicable Standards
Threaded Inlet 1" BSP TR female

Materials of Construction	
Description	Material
Body	Ductile Iron BS EN 1563 EN-GJS 500/7
Cover	Ductile Iron BS EN 1563 EN-GJS 500/7
Float & Lever	Plastic ABS
Seals	EPDM WBS Listed
Fasteners	Stainless Steel 316 Grade A4
Coating	Internal and external blue 2 pack epoxy to WIS 4.52.01 DFT 300 microns



Glenfield Valves Ltd, Glenfield Works, Queens Drive, Kilmarnock, Scotland, KA1 3XF  
Tel: +44 (0) 1563 521150 Fax: +44 (0) 1563 545616 www.glenfield.co.uk

A member of the **AVR** group of companies

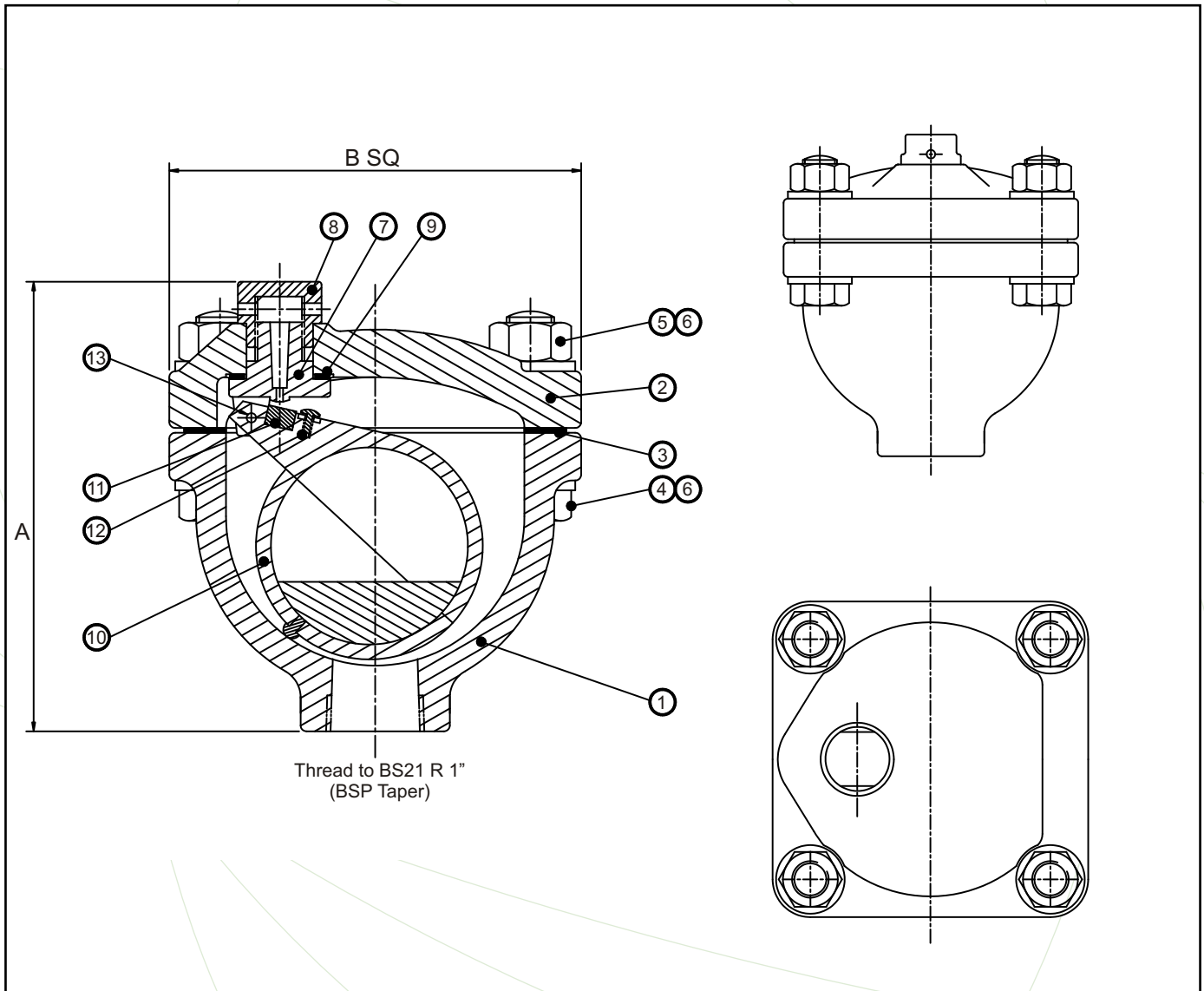


# SPECIFICATIONS

## Series 851/00 (1250) PN16 Single Small Orifice Air Relief Valve

### Component List

1. Body	5. Nut	9. Gasket	13. Fulcrum pin
2. Cover	6. Washer	10. Float sub assembly	
3. Gasket	7. Orifice Bracket	11. Sealing face	
4. Bolt	8. Orifice Cover	12. Adjusting screw	



### Dimensions (mm)

Ref. Nos.	Inlet	A	B	Approx Weight (kg)
851 025 00822000	25	151	138	6.2